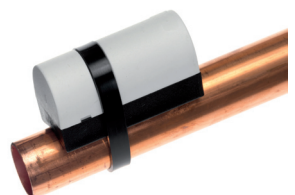
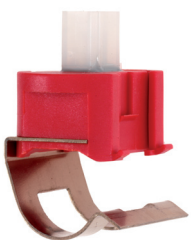
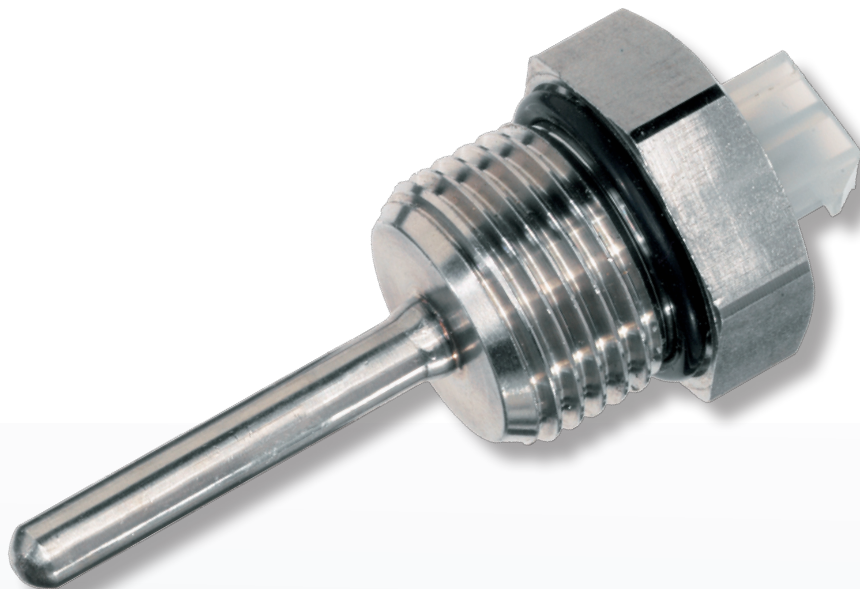


# TEMPERATURE SENSORS

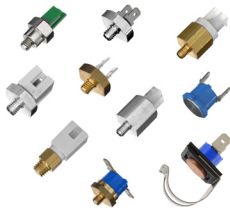


## MADE FOR YOUR APPLICATION.

Tasseron Sensors develops and produces high-quality, customized products for various OEM and industrial markets. All our products exhibit the hallmarks of innovation, performance and reliability. Our range includes temperature sensors, immersion tubes, mechanical temperature controllers, temperature protection devices and related accessories, all subdivided amongst various product series depending on the construction type, function and the applicable technology and field of use. Our electronic temperature sensors are basically resistance meters such as thermistors (NTC and PTC/KTY) and RTDs (Pt and Ni). All Tasseron sensors are approved according to EN 60730-2-9.

### TSA-series (OEM)

OEM system temperature sensors for indirect temperature measurements. Used mostly in central-heating boilers, compressors, heat exchangers, air-conditioning systems, heat pumps and many other domestic and industrial applications.

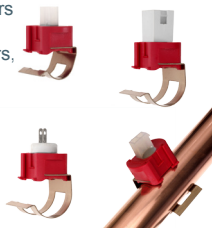


- ✓ simple installation
- ✓ short response time
- ✓ temperature range from -20 to +150°C
- ✓ customized versions available

Design	thermal resistance-element integrated in turned/moulded housing
Measuring element	NTC, PTC (KTY), Pt, Ni in single, 2-wire or double, 4-wire (duplex) version
Material housing	aluminium, brass, stainless steel, copper, moulded plastic
Temperature range	max. -20...150°C (-4...302°F)
Application connection	M4, M5, M6 metric thread, 1/8" BSP thread, flat surface, mounting on pipe with additional clip
Electrical connection	Molex Mini-Fit Jr™ / Faston tabs / Lumberg 2,5 MSF / RAST 5

### TSC-series (OEM)

OEM clip-on temperature sensors for indirect temperature measurements on piping. Mostly used for temperature control/protection in central-heating boilers compressors, compressors, air-conditioning systems, heat exchangers, heat pumps, chillers and humidifiers.



- ✓ considerable cost savings compared to immersion sensors
- ✓ very simple installation
- ✓ wide selection of measuring probes, connections and mountings
- ✓ customised versions available

Design	thermal resistance-element integrated in moulded housing
Measuring element	NTC, PTC (KTY), Pt, Ni in single, 2-wire or double, 4-wire (duplex) version
Material housing	moulded plastic
Temperature range	max. 0...105°C (32...221°F)
Application connection	Stainless steel mounting brackets, standard for 15/18/22 and 28mm pipe diameters. Other diameters en special brackets (locking) on request
Electrical connection	Molex Mini-Fit Jr.™ 2-pole / Micro-Fit™ 4-pole Faston tabs 2,8 x 0,8/0,5 mm

### TSD-series (OEM)

OEM immersion-type temperature sensors for direct temperature measurement. Mostly used for temperature control/protection in central-heating boilers, compressors, compressors, motors, ovens, heat exchangers, heat pumps, catering equipment and humidifiers.



- ✓ direct measurement of the medium's temperature
- ✓ wide selection of measuring probes, connections and mountings
- ✓ temperature range from -20 to +180°C
- ✓ customised versions available

Design	thermal resistance-element integrated in turned, moulded or welded housing
Measuring element	NTC, PTC (KTY), Pt, Ni in single, 2-wire or double, 4-wire (duplex) version
Material housing	aluminium, brass, stainless steel, copper, moulded plastic or ceramic
Temperature range	max. -20...180°C (-4...356°F)
Application connection	1/8", 1/4", 3/8", 1/2" NPT-BSP threads, metric threads, bajonet or push-in available with integrated O-ring sealing
Electrical connection	Molex Mini-Fit Jr™ / Faston tabs / Lumberg 2,5 MSF / RAST 5

### TSK-series

Universal cable temperature sensors for direct or indirect measurement. Used mostly for temperature measurements in electronic control circuits in general equipment, compressors, compressors, ovens, calorimeters, heat recovery units, air-conditioning systems, heat pumps and water-treatment equipment.



- ✓ direct or indirect measurement of the medium's temperature
- ✓ wide selection of measuring probes, connections and mountings
- ✓ temperature range from -40 to +260°C
- ✓ water-tight version available

Design	thermal resistance-element integrated in turned, moulded, deep-drawn or welded housing, complete with connection cable/wires
Measuring element	NTC, PTC (KTY), Pt, Ni in single, 2-wire or double, 4-wire (duplex) version
Material housing	aluminium, brass, stainless steel, copper, moulded plastic or ceramic
Temperature range	max. -40...260°C (-40...500°F)
Application connection	metric/NPT-BSP threads, mounting bracket, straight (for grommet or compress fitting) or for mounting in immersion well
Electrical connection	Stripped wire / unisolated splice / isolated splice / Molex / Tyco / Lumberg connector

### TSP-series

Process and HVAC/refrigeration temperature sensors. Mostly used for temperature control in the HVAC/refrigeration industry, building management systems, the process industry, compressors, water treatment plants, catering equipment and horticulture.



- ✓ direct or indirect measurement of the medium's temperature
- ✓ 'private label' versions available
- ✓ universal dimensions

Design	thermal resistance-element integrated in housing with aluminium head and integrated connector
Measuring element	NTC, PTC (KTY), Pt, Ni in single, 2-wire or double, 4-wire (duplex) version
Material housing	stainless steel, copper
Temperature range	max. -20...180°C (-4...356°F)
Application connection	1/2" BSP thread, metric threads, push-in type, with flange or straight version for mounting in immersion well
Electrical connection	2-, 3-, or 4-pole connector with spring-loaded or screw terminals

### TSAR-serie

Outside or room temperature sensors are mounted to the wall and measure the air temperature. The sensor has a solid construction with a white UV resistant plastic cover to minimize solar influence. it comes in a complete set for mounting on the wall



- ✓ Wall mounted
- ✓ Small design housing
- ✓ Splash proof and UV resistant

Design	thermal resistance-element integrated in moulded plastic housing, with removable cap
Measuring element	NTC
Material housing	moulded plastic, PC
Temperature range	-40...60°C (-40...140°F)
Application connection	To wall with included screw and plug
Electrical connection	2 way cable spring connector, grommet cable entry

## TST-series

Immersion tubes for direct installation within the medium. Applications wherever the temperature has to be measured/controlled and where the temperature sensor/thermostat has to be installed within the medium in a safe and maintenance-friendly manner.

- ✓ 100% leak tested
- ✓ direct installation within the medium
- ✓ selection of corrosion-resistant materials



Design	watertight housing, full one-piece latch-turned or two-piece welded/brazed
Material housing	brass (with/without nickel plating), copper or stainless steel in several qualities
Application connection	1/8", 1/4", 3/8", 1/2" NPT-BSP threads, metric threads available with integrated O-ring sealing

## TC-serie

Thermostatic capillary controllers and limiters. This type of immersion thermostat, for use in hot-water heating systems, cuts out the burner/heating system when the water temperature rises to a preset level.

- ✓ simple mechanical temperature controller/protection device
- ✓ very simple installation
- ✓ internal/external settings, automatic or manual reset
- ✓ various process connections using immersion tubes



Design	capillary control thermostat in external enclosure
Temperature setting	external adjustable, internal adjustable, internal fixed setting
Temperature range	0...110°C (-32...230°F)
Switching type	normally closed / normally open
Application connection	flat surface or immersion-well mounting
Electrical connection	2- or 3-pole screw clamp
Material housing	moulded plastic, UL94V0, IP20
Approval	UL353



The Tasseron company has worldwide operations and 90 years of experience in the development, production and supply of control and instrumentation equipment. Tasseron products are manufactured within The Netherlands. This is made possible by means of streamlined efficient processing, short production lines and minimising overhead. Thanks to this strategy Tasseron can offer her clients the required flexibility and quality at competitive prices.

